

NEW UDEO BOLLARD S

IP65 IK06 CE F III | A A+ A++

TIPOLOGIA / TYPOLOGY

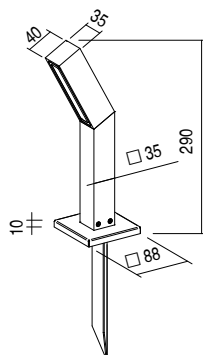
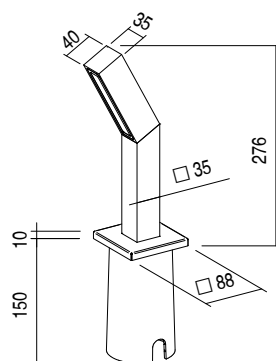
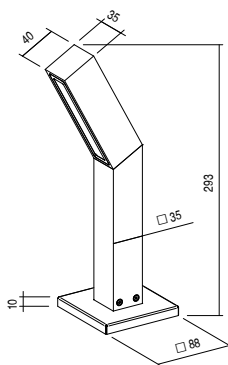
Paletto | Bollard

POSIZIONE INSTALLATIVA | INSTALLATION POSITION

A terra | Ground mounting

AMBIENTE INSTALLATIVO | INSTALLATION LOCATION

Esterno | Outdoor



UDEO BOLLARD S

H 290mm

9,5W

kg 0,69

## CARATTERISTICHE ELETTRICHE | ELECTRICAL FEATURES

POTENZA ASSORBITA   POWER CONSUMPTION	9W
ALIMENTAZIONE   POWER SUPPLY	24Vdc
ALIMENTATORE   POWER SUPPLY UNIT	9W - 24Vdc non incluso   Not included
DIMMERAZIONE   DIMMING	Dimmerabile Push, DMX, DALI, 1-10V, taglio di fase Push, DMX, DALI, 1-10V, phase cut dimmable
COLLEGAMENTO   CONNECTION	Parallelo   Parallel

## CARATTERISTICHE ILLUMINOTECNICHE | LIGHTING FEATURES

COLORE LED   LED COLOUR	2700K, 3000K, 4000K, Red, Green, Blue			
INDICE RESA CROMATICA CRI   CRI	>80 (2700K, 3000K, 4000K)			
BINNING	3 step MacAdam   3 MacAdam steps			
OTTICHE   OPTICS	25°, 36°, 62°, Diffused			
UGR	<19			
FLUSSO TOTALE REALE TOTAL OUTPUT LUMENS	36°	694lm(2700K)	771lm (3000K)	848lm (4000K)
DURATA MEDIA LED   AVERAGE LED LIFE	50.000h L80 B10			

## CARATTERISTICHE MECCANICHE | MECHANICAL FEATURES

PESO   WEIGHT	Kg 0,69
FINITURE   FINISHES	Bianco txt, Grigio txt, Nero txt, Corten, Antracite txt, Verde, Sand txt White, txt Grey, txt Black, Corten, txt Anthracite, Green, Sand
INSTALLAZIONE   INSTALLATION	A terra con basetta, viti (incluse) e cassaforma (non inclusa) On ground with base, screws (included) and housing box (not included)
MATERIALE   MATERIAL	Corpo, basetta e stelo in alluminio verniciato, vetro temperato serigrafato Body, base and stem in varnished aluminium, silk-screen printed tempered glass


## CARATTERISTICHE GENERALI | GENERAL FEATURES

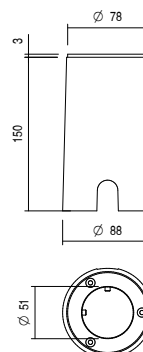
TEMPERATURA DI ESERCIZIO OPERATING TEMPERATURE	-10°C +45°C
GRADO DI PROTEZIONE   INGRESS PROTECTION	IP65
GRADO DI RESISTENZA   IMPACT RESISTANCE	IK06
GLOW WIRE TEST   GLOW WIRE TEST	960°C.
TEMPERATURA MASSIMA APPARECCHIO MAX. TEMPERATURE OF FIXTURE	40° @ Ta = 25°
CLASSE DI ISOLAMENTO   APPLIANCE CLASS	III
CALPESTABILE   WALKOVER	/
CARRABILE   DRIVE OVER	/
CAVI DI ALIMENTAZIONE   POWER CABLES	Fornito con 50 cm di cavo   Provided with 50 cm cable
SICUREZZA STANDARD   STANDARD SAFETY	/
SICUREZZA FOTOBIOLOGICA PHOTOBIOLOGICAL SAFETY	GR1


NEW

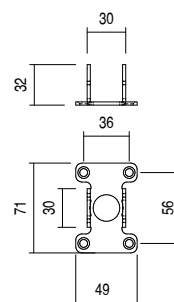
## UDEO BOLLARD


ACCESSORI | ACCESSORIES

<b>CODICE / CODE</b>	<b>CAU02</b>
<b>TIPOLOGIA / TYPOLOGY</b>	<b>KIT Cassaforma   KIT Housing box</b>  kg 0,38
<b>MATERIALE   MATERIAL</b>	<b>Cassaforma in ABS, Flangia in alluminio</b> ABS Housing box, aluminium flange



<b>CODICE / CODE</b>	<b>BAU01</b>
<b>TIPOLOGIA / TYPOLOGY</b>	<b>Staffa   Bracket</b>  kg 0,1
<b>MATERIALE   MATERIAL</b>	<b>Acciaio inox AISI 304</b> Stainless steel AISI 304



<b>CODICE / CODE</b>	<b>PIU01</b>
<b>TIPOLOGIA / TYPOLOGY</b>	<b>Pichetto   Peg</b>  kg 0,15
<b>MATERIALE   MATERIAL</b>	<b>Acciaio inox AISI 304</b> Stainless steel AISI 304

